

Previous Students Comments

“I have really enjoyed Sociology and I think that this has something to do with the way that it is taught at Aquinas.”

“It has been very interesting and I feel that I have become more confident in myself through the discussions in class.”

“I think this subject should be a core subject. I found it absolutely fascinating and looked forward to every lesson. The teaching of the subject by staff was excellent”

“The course content has been explained constantly throughout the course.”

“I thoroughly enjoyed the course and would recommend it to future students.”

“Best department I’ve come across.”

Original source of comments available in department.

Course Requirements

- **A good spread of GCSE subjects**
- **A competent pass in GCSE English**
- **A genuine interest in social issues**
- **An enquiring mind**
- **The motivation to take control of your own learning**

Possible subject combinations

Health and Social Studies

Economics

English

Government and Politics

History

Psychology

... in fact Sociology complements most A levels.

For further details contact any of the following members of the department:

Stuart Greenhalgh - sgstaff@aquinas.ac.uk

Alison Hall - ahastaff@aquinas.ac.uk

Conneth Poland - cpostaff@aquinas.ac.uk

Nina Wainwright - nwastaff@aquinas.ac.uk

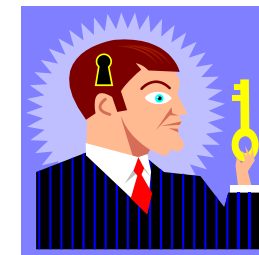


AQUINAS COLLEGE

NANGREAVE ROAD • STOCKPORT • CHESHIRE • SK2 6TH

TEL: 0161 483 3237 • FAX: 0161 487 4072

Email: enquiries@aquinas.ac.uk • www.aquinas.ac.uk



**Great minds
don't
think alike !**

**try
sociology !**

The Course

Whether you choose to just broaden your knowledge base with an AS or continue to a full A level, you will find both courses stimulating and thought provoking.

You will study how society works, the relationship between the individual and society, how people interact and form social groups

You will also investigate through theories and previous research how sociologists attempt to understand and make sense of some of the following social debates and issues:

- **the reasons for an increase in different kinds of families**
- **the decline in the popularity of marriage**
- **the influence of social class, ethnicity and gender on educational achievement**
- **the role of religion in society**
- **the apparent rise in crime**
- **how sociologists obtain their data**

You will develop study skills enabling you to produce balanced, objective evaluations of social issues by applying theoretical perspectives and related research.

Examination Examining Board - AQA

Year one AS Level

UNIT 1

1 hour - **Families and Households**
40% AS, 20% A level

UNIT 2

2 hours - **Education/Research Methods**
60% AS, 30% A level

Year two A2 Level

UNIT 3

1 ½ hours - **Beliefs in Society**
20% A level

UNIT 4

2 hours - **Crime and Deviance/Theory and Methods**
30% A Level

Higher Education and Related Careers

Apart from straight Sociology degrees, there are now numerous combined / modular degrees which allow you to continue your sociological studies along with other subjects.

Example:

- Combined Social Sciences
- Sociology/Psychology
- Sociology/Criminology
- Sociology/Social Policy
- Sociology/Law
- Sociology/English
- Sociology/History of Art
- Sociology and Computer Studies

The conceptual and empirical nature of Sociology provides an excellent foundation for a wide variety of careers.

A level Sociology is a valid and useful qualification for the following careers:

- Teaching
- Police
- Nursing
- Business
- Civil Service
- Local Government
- Town Planning
- Administration
- Human Resource Management
- Legal Professions