

Criminal Psychology - which includes the topics:

- Turning to crime
- Making a case
- Reading a verdict
- After a guilty verdict

Careers in Psychology

Studying Psychology is stimulating and many students go on to study Psychology at degree and postgraduate levels. Psychologists are currently working in areas as diverse as:

- Personnel selection
- Industrial design
- Education
- Health
- Social work
- Prison service
- Police
- Marketing and advertising
- Clinical / psychiatric care

If you require any further information please contact any of the following staff:

Priya Bradshaw (Head of Psychology)

Tracey Ellis

Ruth Hewitt

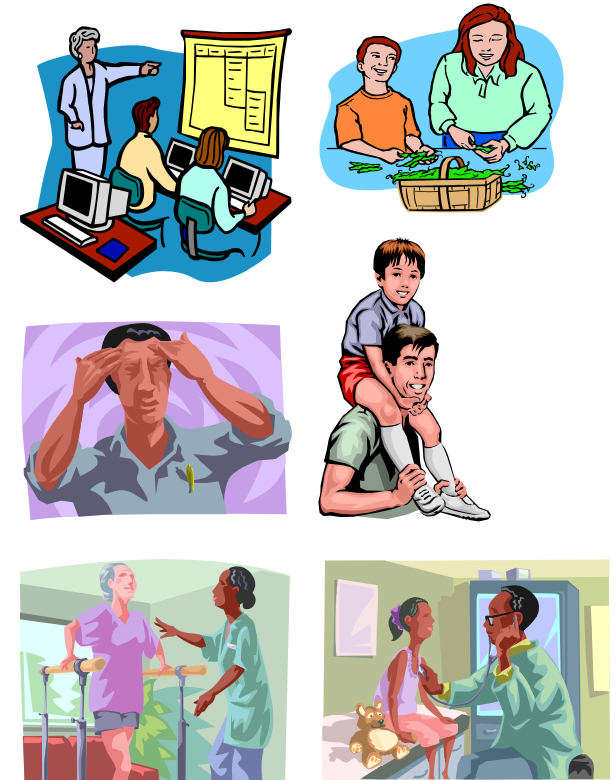
Jeremy Hopper

Jaki Singleton

Sonia Smith

Janet Thornley

Sally Watts



AQUINAS COLLEGE

NANGREAVE ROAD • STOCKPORT • CHESHIRE • SK2 6TH

TEL: 0161 483 3237 • FAX: 0161 487 4072

Email: enquiries@aquinas.ac.uk • www.aquinas.ac.uk

Psychology
Information

Psychology AS / A



Exam Board: OCR

What is Psychology ?

Simply defined. Psychology is the study of human behaviour such as obedience and aggression, and mental processes such as memory and perception. Contrary to popular belief psychologists do not only concentrate on the abnormal, they are mainly concerned with everyday aspects of behaviour.

Entry Requirements

You do not need to have studied Psychology before. A good spread of GCSE subjects is a useful basis, and since the study of Psychological research involves many of the concepts used in Science and some elements of Maths, it is important to have good grades in these.



Course Structure



AS level (1st Year)

Module

1. Practical investigations
2. Core studies

Exam

- 1 hr
2 hrs

A2 (2nd Year)

3. Options in applied Psychology

Exam

2 hrs

Two from: Forensic, Health, Education, Sport.

4. Approaches and research methods in Psychology

1½ hrs



Course Content

AS Level

15 pieces of psychological research are reviewed in the first year, these include studies on:

- Obedience
- Memory
- Aggression
- Phobias
- Helping behaviour
- Prison life

Four practical investigations are also carried out in the Autumn term, these include:

- An observation
- Experiment
- Correlation
- Questionnaire

A level (A2)

Applied Psychology is the focus for the second year; this is how psychology can be used in real life settings. Two areas are covered with eight topics in each:

Health Psychology - which includes the topics:

- Healthy living
- Stress
- Dysfunctional behaviour
- Disorders

cont.....